



HOW HELP



2021-2022 ANNUAL REPORT

The Christchurch Aunties

Our Mission

To provide practical support and donations for agencies and organisations in Canterbury who advocate for vulnerable women and children.

Our Vision

A Canterbury where all women and children who have experienced family violence or vulnerability, are safe, well supported and resourced through agencies that we collaborate with.

In a Nutshell

The Christchurch Aunties provides practical donations for women and children who have experienced family violence and/or hardship. This includes items such as furniture, homewares, toiletries, security cameras, Safelets, pamper gifts, Christmas presents, and bedding. We achieve this by mobilising a team of over 5,000 'Aunties' in the community to donate. We support those in Christchurch, Waimakariri, Selwyn, Hurunui, Ashburton, and Kaikoura districts.

"Yesterday Papanui did a swap around of unwanted and extra goodies. Turns out not many knew of your work. They do now. A young Mum praised you all for setting up a home for her family, she says she still wants for nothing. Big thankyou from her to you all."

Margaret, Papanui



From the Chairperson

The financial year ending March 2022 was another big year for The Christchurch Aunties. Despite the challenges of operating during another year of Covid disruption, we have grown. We have grown our volunteer membership, we have increased the number of organisations we support, and we have grown our reach into Canterbury. We've also grown to sustain a full time permanent employee through Heather's incredible vision and drive, which has set a sound foundation for our new manager to continue to build on our success. None of which would have been possible without the aroha and support given by the 5,200 Aunties who champion our cause. Their support is fundamental to our mahi.

Thanks are given to our funders, whose financial aid allow us to tautoko more organisations and ultimately more women and children affected by violence or vulnerability.

My personal thanks are given to all members of the Board for their support and hard work this year, ensuring we are on track with the aspirations and future undertakings of The Christchurch Aunties.

My specific and most grateful appreciation goes to the founder and outgoing Manager of Christchurch Aunties, Heather Milne. A woman of vision, with a huge heart, whose dedication and determination has taken the seed of an idea, and nurtured it into a literal forest of caring, collaboration and connectivity within Canterbury. Kei te mihi wahine ataahua.

I look forward to seeing just how much more growing we can get done in the next year.

***Ka whāngaia, ka tipu, ka puāwai
Nuture it, it will grow and then blossom***

- Reetah Mitchell, Chairperson

From the Manager

The past year has been an incredible 12 months of growth for The Christchurch Aunties. We have increased our understanding of the needs of vulnerable women and children as we started collaborating with more organisations that reach throughout Canterbury. The support from the community was unprecedented and unflinching. My highlights include:

- Moving into our new HQ and office space in Sockburn
- Streamlining processes to increase work efficiency
- Working with Dress for Success and Department of Corrections to create a sector-wide hui
- Continuing our work throughout Covid interruptions
- Growing our reach in Canterbury, and meeting hundreds of like-minded people
- Diversifying our donation capability through networking

As I leave my role at The Christchurch Aunties, I reflect on the past six years. I've learnt that thousands of people in the community want to help, and we've given them a platform to do this. Providing a space where people can support others so easily is something I'm very proud of. I also look forward to the future of the Christchurch Aunties, and the fresh skills and approach that the incoming manager will bring.

Thank you to everyone, particularly the Board, for their love.

***Ehara taku toa i te toa takitahi,
engari he toa takitini
My success is not mine alone, it
is the success of the collective***

- Heather Milne, outgoing
Manager



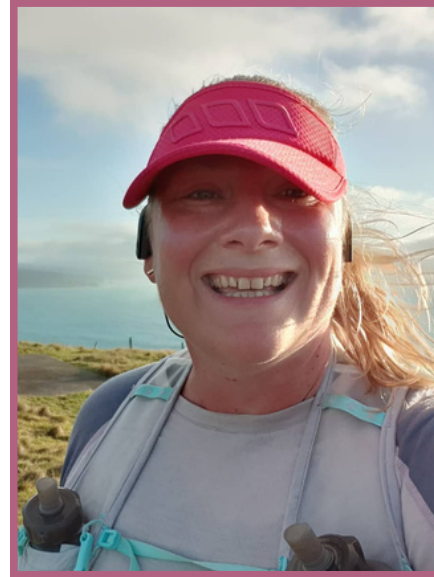
Our People



Reetah Mitchell
Chairperson/Trustee



Sati Ravichandiren
Secretary/Trustee



Holly Gibson
Treasurer/Trustee



Heather Locke - Trustee



Fi Archer - Trustee



Dr Jacqui Johnson - Trustee



Heather Milne
Founder/outgoing Manager



Karon Storr
Incoming Manager

At a Glance

21 local Canterbury organisations supported

88 security items donated (cameras, Safelets, phones)

549 requests received from organisations

8,384 recipients of our donations and support

15,546 items sourced and donated

17 schools and local community groups donated or volunteered with us

39 local businesses donated or volunteered

5,201 'Aunties' in our membership

29,253 times our Aunties engaged with us on Facebook

514,240 people who have seen one of our Facebook posts

107 Volunteers

1,452 worked hours



"A massive thank u for every household item gifted. I've really settled in well with the help of you guys. So from the bottom of our hearts, endless thank you. God's love and blessings upon you all. It really has been a fresh start for us and especially a fresh start for me and my parents. I can't thank you enough."

Recipient of homewares

A Little More Detail

Supplies Donated:

Toiletries	5727	Furniture & whiteware	625
Pamper & seasonal gifts	4478	Other	636
Kitchen gear	1782	Electrical items	105
Kids' things	1057	Security items	88
Bedding & linen	940	Total	15,546

Organisations Supported:

Aranui Community Trust	PIPS
Aviva	Project Esther
Battered Women's Trust	Rowley Resource Centre
Cholmondeley	Shakti Women's Refuge
Christchurch Methodist Mission	Te Puawaitanga
Early Start	Te Puna Oranga
Empower Church	Te Whare Hauora
Family Works	Vision West
He Waka Tapu	YWCA
Linwood Corner Community Trust	West Christchurch Women's Refuge
Nga Maata Waka	

Volunteer involvement:

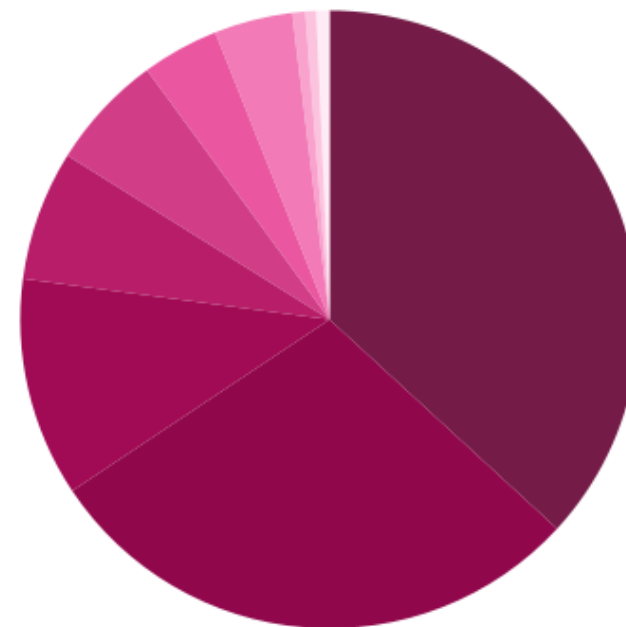
Delivering/collecting donations	Tag and testing donations
Sewing	Repairing donations
Folding & sorting bedlinen	Fundraising
Making kitchen packs	Governance
Marketing/comms	

"Women who have to start from scratch when leaving abusive relationships need to know that organisations like The Christchurch Aunties are there to help where possible. Thank you Christchurch Aunties, we love you!"

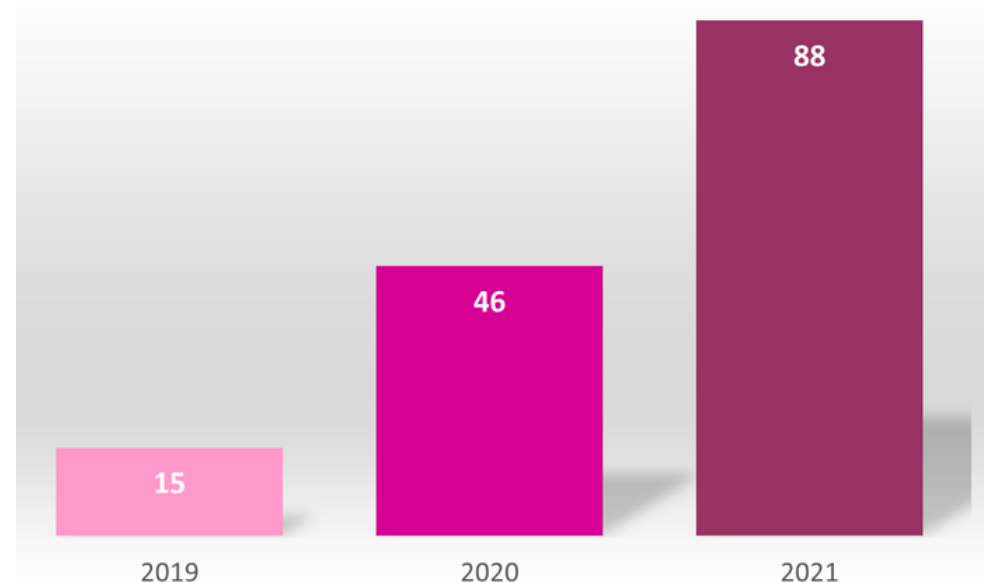
Tania, Manager, YWCA

Types of donations:

- Toiletries
- Pamper & seasonal gifts
- Kitchen gear
- Kids things
- Bedding & linen
- Furniture & whiteware
- Other
- Electrical items
- Security items
- Security



Security items donated per year:



Raising Funds

The Christchurch Aunties' activities in the year ending March 2021 were funded by private and corporate donors, together with grants from:

Rata Foundation
Ministry for Women
Lotteries Community
COGS
Mainland Foundation
Pub Charity
Christchurch Foundation

We also coordinated specific calls-to-action during the year for funds and supplies. Public campaigns included:

Christmas Campaign 2021
Love Grace Handbags 2021
Easter Campaign 2021
Hearts Badge Campaign
Undie Run/100 Coats 2021
Back to School Campaign

"You took the pressure off them trying to balance and prioritise gifts and food. You do amazing work and to yourself and all the volunteers and donors, we appreciate and love the work, time and aroha."

Anni
Kāhu Matarau



Thank you

Academy Hire
Adapted Yoga and Pilates
Alison Poulter
ANZCO
Aotearoa Multicultural Women Association
Ashburton Art Gallery
Auntie 'V' our handy person
Auntie Rebekah
Blair Poland
Canterbury Sled Dog Club
Casino Court Motor Lodge
Christchurch Airport
Christchurch Jewish Society
City Care Property
Craigs Investment Partners
Darfield Food & Clothing Bank
Everybody's Butchery
Friday Creative
Fulton Hogan
Greenwood Roche
Headspace Hair Salon
Holmes Solutions
Hush Hairstyling
ICC Women's Cricket World Cup
Ju at Studio Home and Tanja at Misery

Kirkwood Intermediate Yr 8 students
Kiwanis Club of North West Christchurch
Lane Neave Christchurch
Lincoln Catholic Women's Group
Matipo Garage
Miranda at Ico Traders
Mitton Electronet
Mondelez
Native Chiropractic
Preston Park Residents group
Rachel Hay Design
Reform Fitness
Rodgers and Co Chartered Accountants
Rotary Club Cashmere
Safelet
Sant Nirankari Mandal New Zealand
Shirley Boys' High School
The Birdwood
The Christchurch Foundation
The Dream Trust at ENGEO
The Mohair Store
The Period Place
Whakaraupo Carving Centre
Whitcoulls Hornby
Window Treatments NZ

Also special thanks to the 5,201 Christchurch Aunties in our community who supported us throughout the year.

Legal name: The Christchurch Aunties
Other name: ChCh Aunties
Type of entity: Registered charity
Registration number: CC57383

Physical address: 3/19 Nga Mahi Road
Sockburn
Christchurch

Postal address: 7 Clematis Place
Wigram
Christchurch

Phone: 027 5144 244

Email: karon@chchaunties.org.nz

Website: www.christchurchaunties.org.nz

Structure: 6 Board Members, 107 volunteers, and one paid manager (40 hours per week).

This performance report has been approved by Heather Milne for and on behalf of The Christchurch Aunties.



Heather Milne
Outgoing Manager of The Christchurch Aunties
May 2022



Reetah Mitchell
Chairperson of The Christchurch Aunties
May 2022

Statement of Receipts and Payments

Year ending March 2022

	2022	2021
Operating Receipts		
Donations, fundraising and other similar receipts	114,872.63	86,690.88
Fees, <u>subscriptions</u> and other receipts from members	0	0
Receipts from providing goods or services	0	0
Interest, <u>dividends</u> and other investment income receipts	7.97	11.53
Grants received/balances carried forward	(19,509.94)	0
Other operating receipts	0	0
Total Operating Receipts	95,370.66	86,690.88

Operating Payments		
Payments related to public fundraising	23,705.60	27,724.07
Volunteer and employee related payments	55,727.39	16,861.52
Payments related to providing goods or services	29,578.08	19,246.01
Grants and donations paid	0	0
Other operating payments	0	0
Total Operating Payments	109,011.07	63,831.60

Operating Surplus or (Deficit)	(13,640.41)	22,870.81
---------------------------------------	--------------------	------------------

Capital Receipts		
Receipts from the sale of resources	0	0
Receipts from borrowings	0	0

Capital Payments		
Purchase of resources	1,695	0
Repayments of borrowings	0	0

Increase/(Decrease) in Bank Accounts and Cash	33,055.69	29,279.74
--	------------------	------------------

Bank accounts and cash at the beginning of the financial year	36,933.74	7,654
Bank Accounts and Cash at the End of the Financial Year	69,989.43	36,933.74

Represented by:		
Cheque account(s)	69,989.43	36,933.74

Total Bank Accounts and Cash at the End of the Financial Year	69,989.43	36,933.74
--	------------------	------------------

Statement of Resources and Commitments

Year ending March 2022

	2022	2021
Bank accounts and cash (from Statement of Receipts and Payments)	69,989.43	36,933.74
Money held on behalf of others	0	0
Money owed to the entity	0	0
Other resources	0	0

Schedule of Commitments

	2022	2021
Money payable by the entity		
Unpaid invoices for payments for goods or services	963.13	445
GST Payable	0	0
PAYE	182.95	-51.32
Other commitments	0	0
Guarantees	0	0

Schedule of Other Information

	2022	2021
Grants or donations with conditions attached (where conditions not fully met at balance date)	0	0
Resources used as security for borrowings	0	0

Notes to the Performance Report

For the year ended: 2022

Accounting Policies

Basis of preparation

The Christchurch Aunties is permitted by law to apply PBE SFR-C (NFP) Public Benefit Entity Simple Format Reporting - Cash (Not-For-Profit) and has elected to do so. All transactions are reported in the Statement of Receipts and Payments and related Notes to the Performance Report on a cash basis.

Goods and Services Tax (GST)

The Christchurch Aunties is not registered for GST. Therefore, amounts recorded in the Performance Report are inclusive of GST (if any).

Correction of errors

The report completed for the year ending 31/03/2021 omitted a funds received by corporations grants. The income recorded in the 2021 financial year only recorded donations received from individuals. We have now corrected this error in the current report.

Related party transactions

There were no transactions involving related parties during the financial year. (Last Year - Nil)
